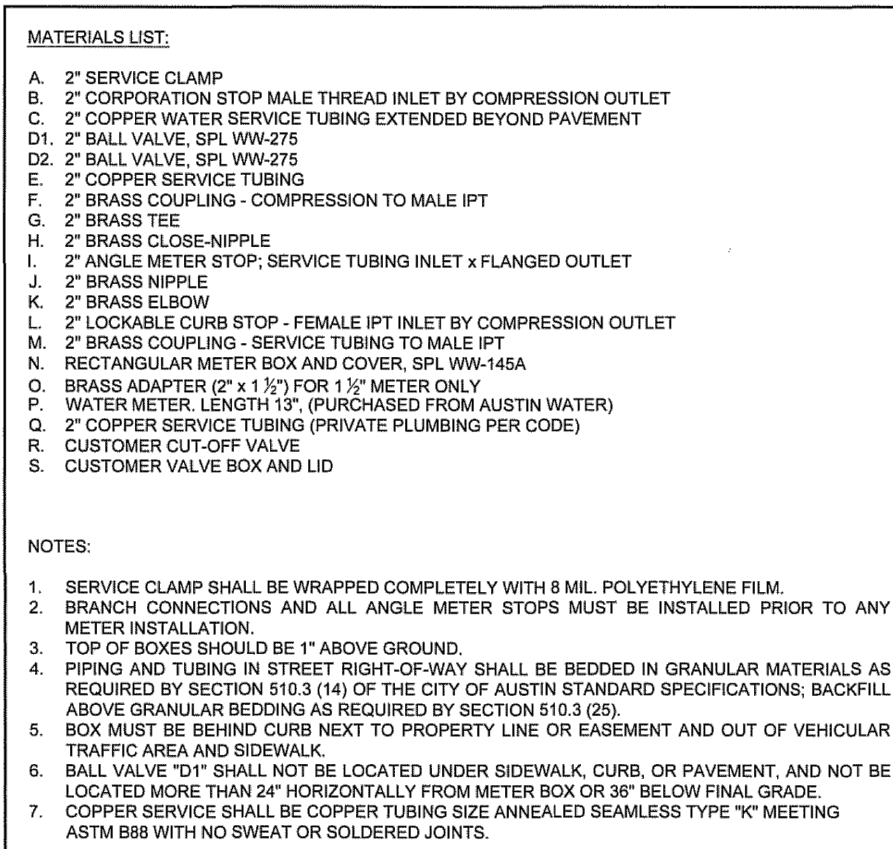
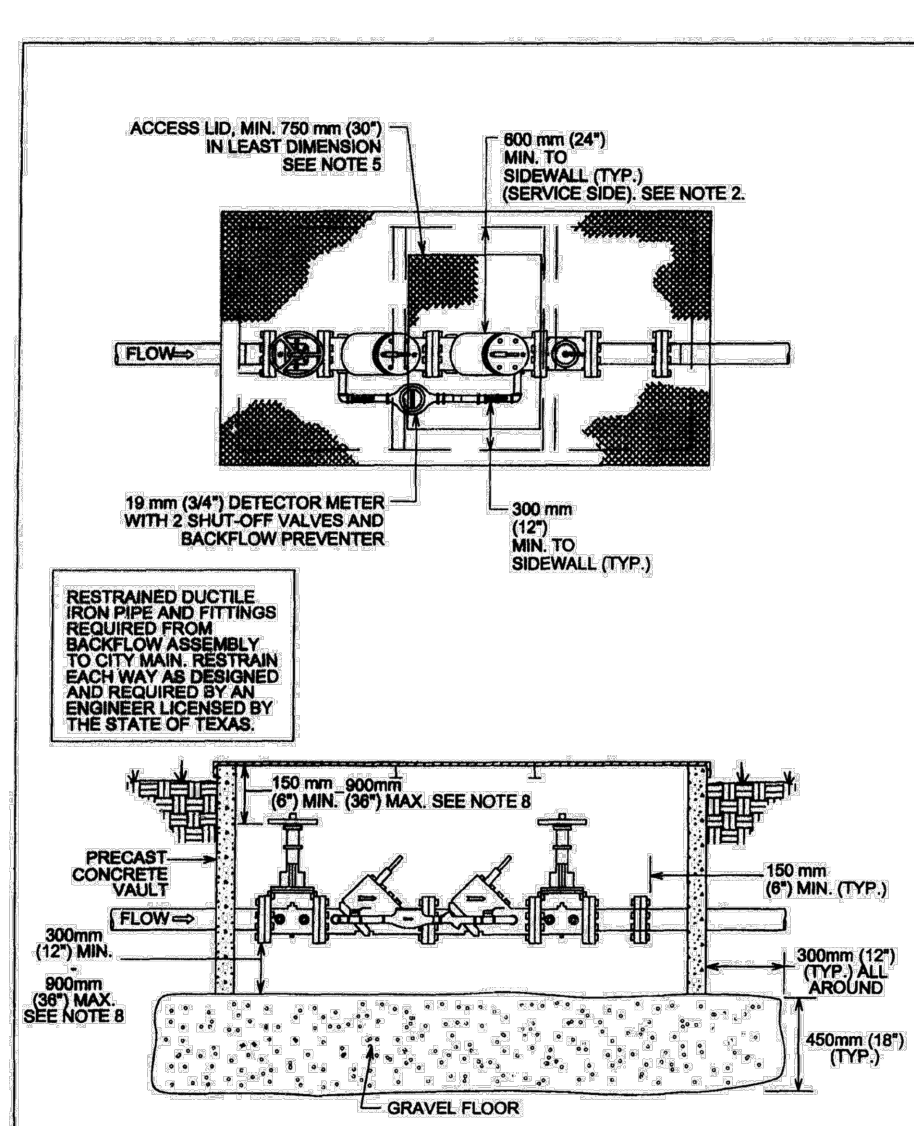


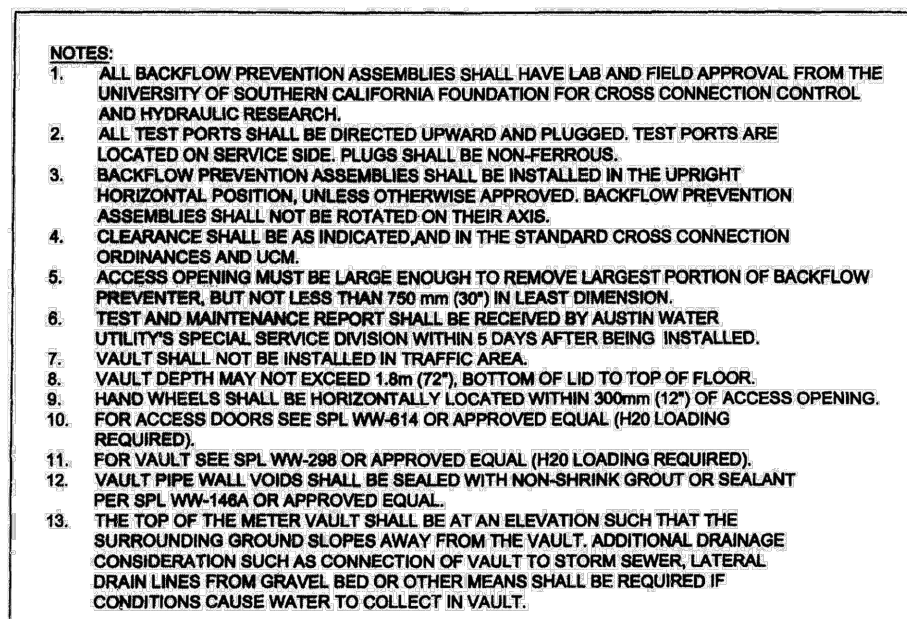
CITY OF AUSTIN AUSTIN WATER	1 1/2" - 2" METER INSTALLATION SHOWING OPTIONAL BYPASS	STANDARD NO. 520-AW-04 1 OF 2
Kathie A. Powers	05/18/2016 ADOPTED	THE ARCHITECT/ENGINEER ASSUMES RESPONSIBILITY FOR APPROPRIATE USE OF THIS STANDARD.



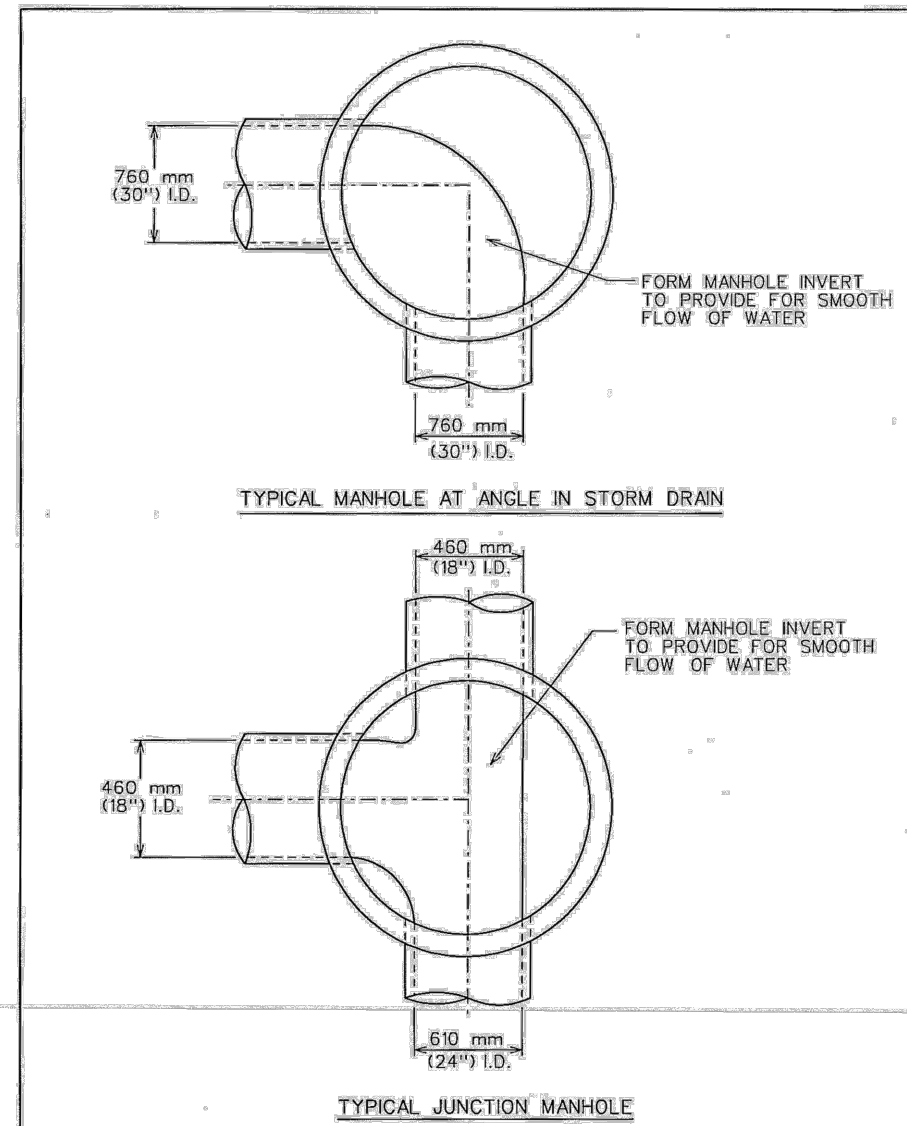
CITY OF AUSTIN AUSTIN WATER	1 1/2" - 2" METER INSTALLATION SHOWING OPTIONAL BYPASS	STANDARD NO. 520-AW-04 2 OF 2
Kathie A. Powers	05/18/2016 ADOPTED	THE ARCHITECT/ENGINEER ASSUMES RESPONSIBILITY FOR APPROPRIATE USE OF THIS STANDARD.



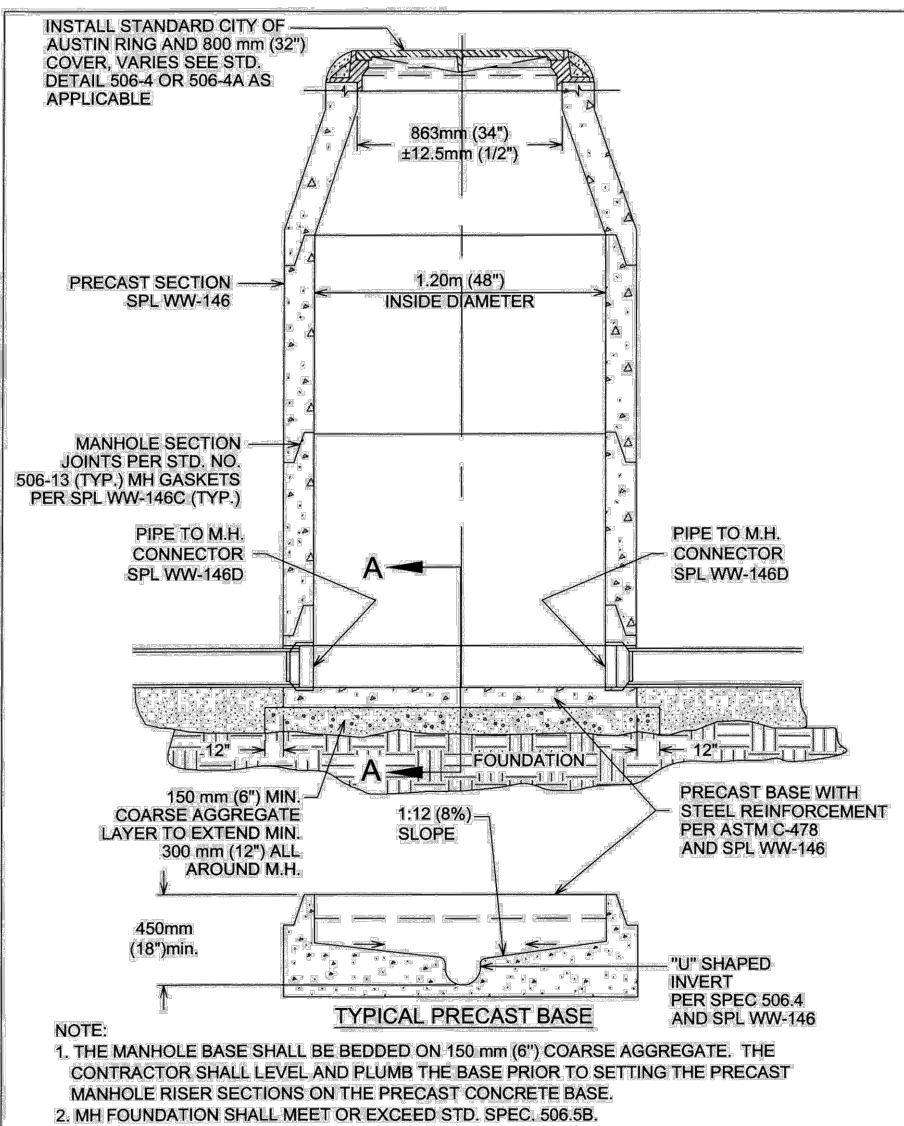
CITY OF AUSTIN AUSTIN WATER	1 1/2" - 2" METER INSTALLATION SHOWING OPTIONAL BYPASS	STANDARD NO. 520S-19C 1 OF 2
Kathie A. Powers	05/18/2016 ADOPTED	THE ARCHITECT/ENGINEER ASSUMES RESPONSIBILITY FOR APPROPRIATE USE OF THIS STANDARD.



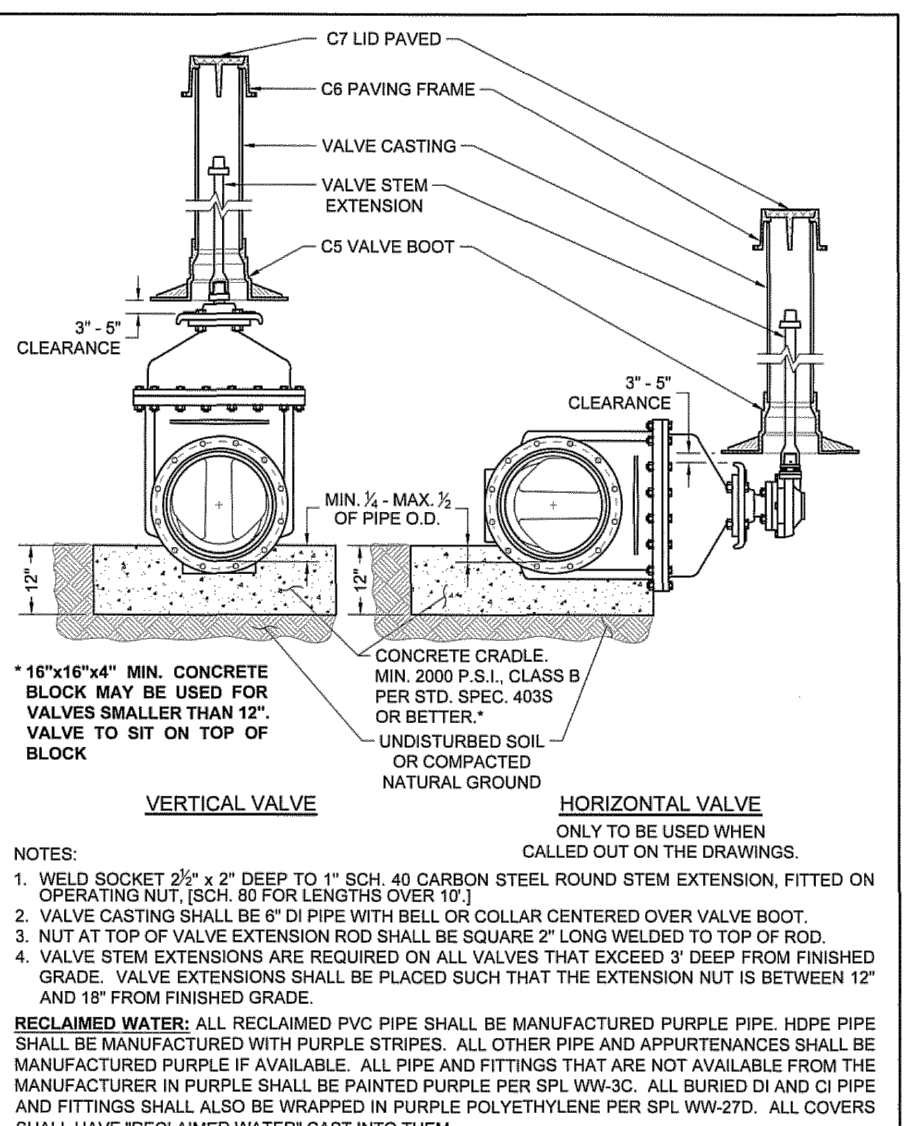
CITY OF AUSTIN AUSTIN WATER	1 1/2" - 2" METER INSTALLATION SHOWING OPTIONAL BYPASS	STANDARD NO. 520S-19C 2 OF 2
Kathie A. Powers	05/18/2016 ADOPTED	THE ARCHITECT/ENGINEER ASSUMES RESPONSIBILITY FOR APPROPRIATE USE OF THIS STANDARD.



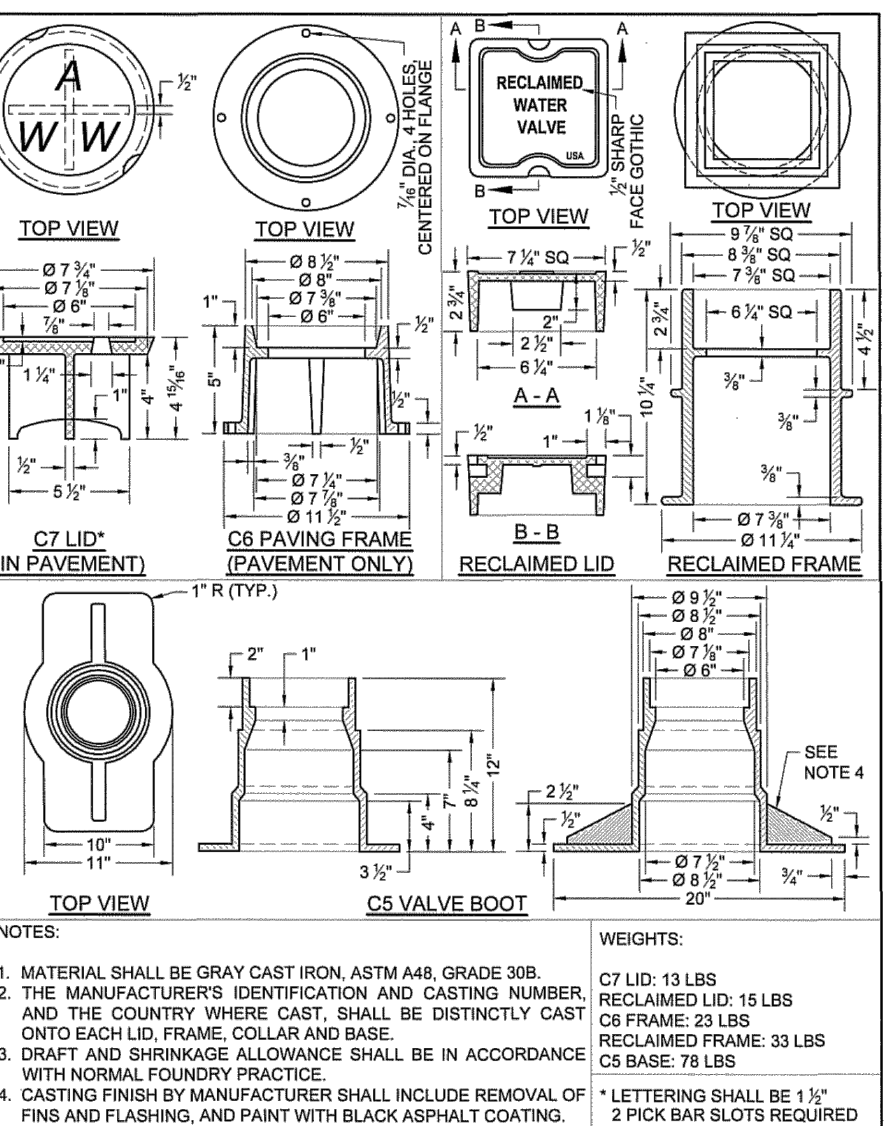
CITY OF AUSTIN AUSTIN WATER	1 1/2" - 2" METER INSTALLATION SHOWING OPTIONAL BYPASS	STANDARD NO. 506S-1 1 OF 2
Kathie A. Powers	05/18/2016 ADOPTED	THE ARCHITECT/ENGINEER ASSUMES RESPONSIBILITY FOR APPROPRIATE USE OF THIS STANDARD.



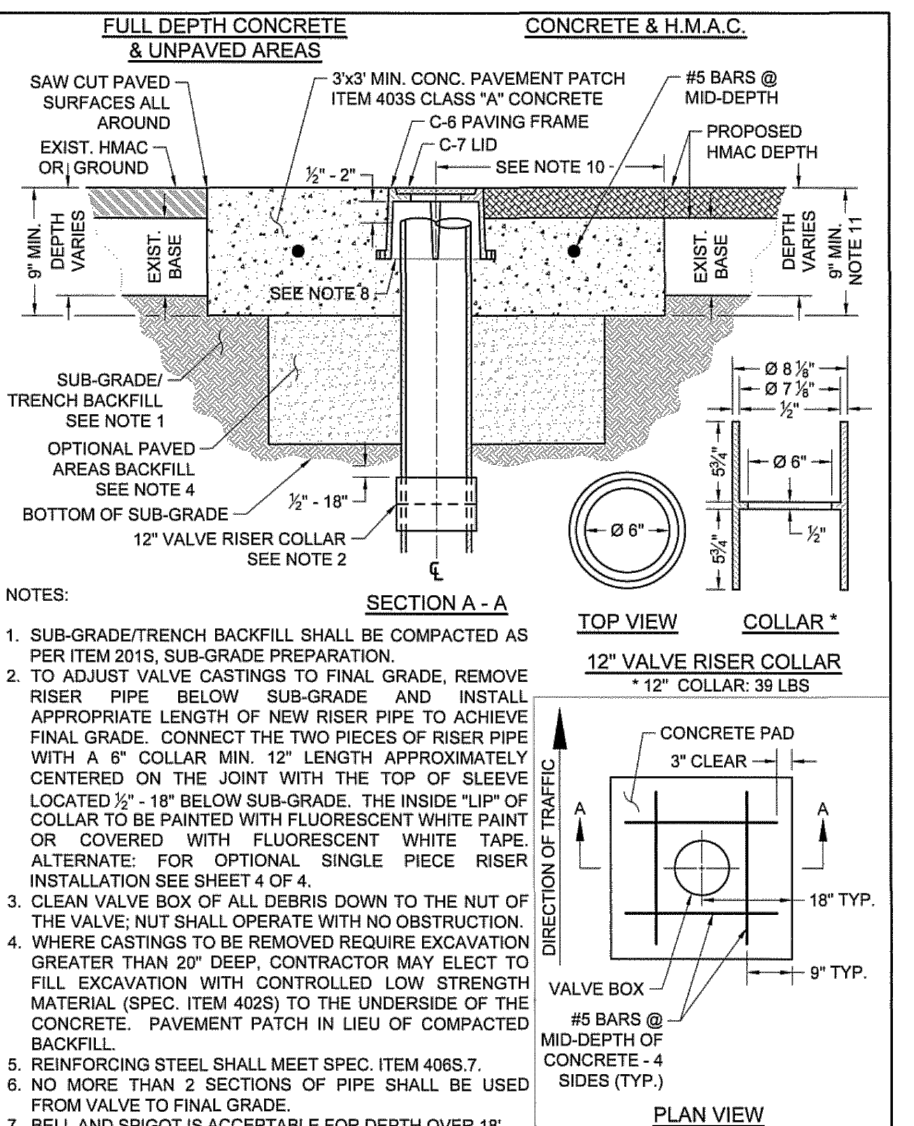
CITY OF AUSTIN AUSTIN WATER	1 1/2" - 2" METER INSTALLATION SHOWING OPTIONAL BYPASS	STANDARD NO. 506S-10 1 OF 2
Kathie A. Powers	05/18/2016 ADOPTED	THE ARCHITECT/ENGINEER ASSUMES RESPONSIBILITY FOR APPROPRIATE USE OF THIS STANDARD.



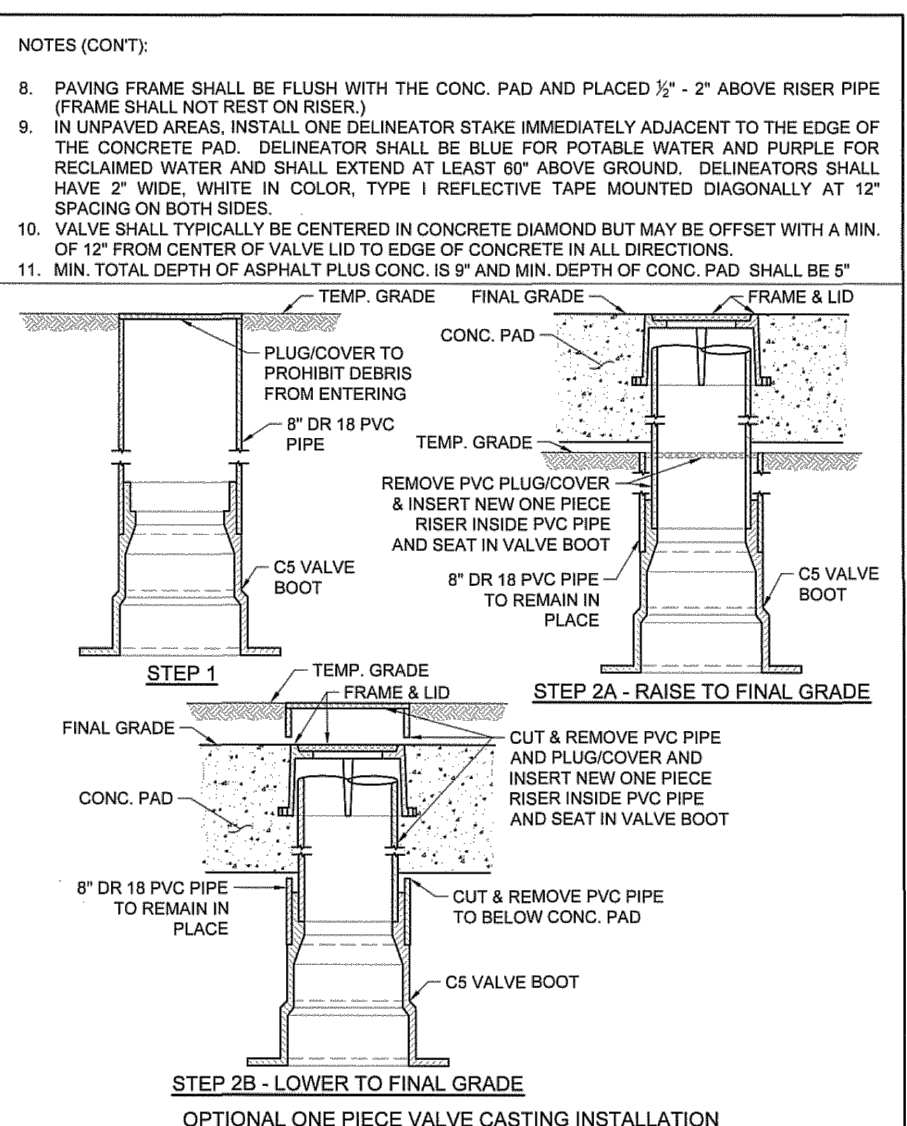
CITY OF AUSTIN AUSTIN WATER	1 1/2" - 2" METER INSTALLATION SHOWING OPTIONAL BYPASS	STANDARD NO. 511-AW-01 1 OF 4
Kathie A. Powers	05/18/2016 ADOPTED	THE ARCHITECT/ENGINEER ASSUMES RESPONSIBILITY FOR APPROPRIATE USE OF THIS STANDARD.



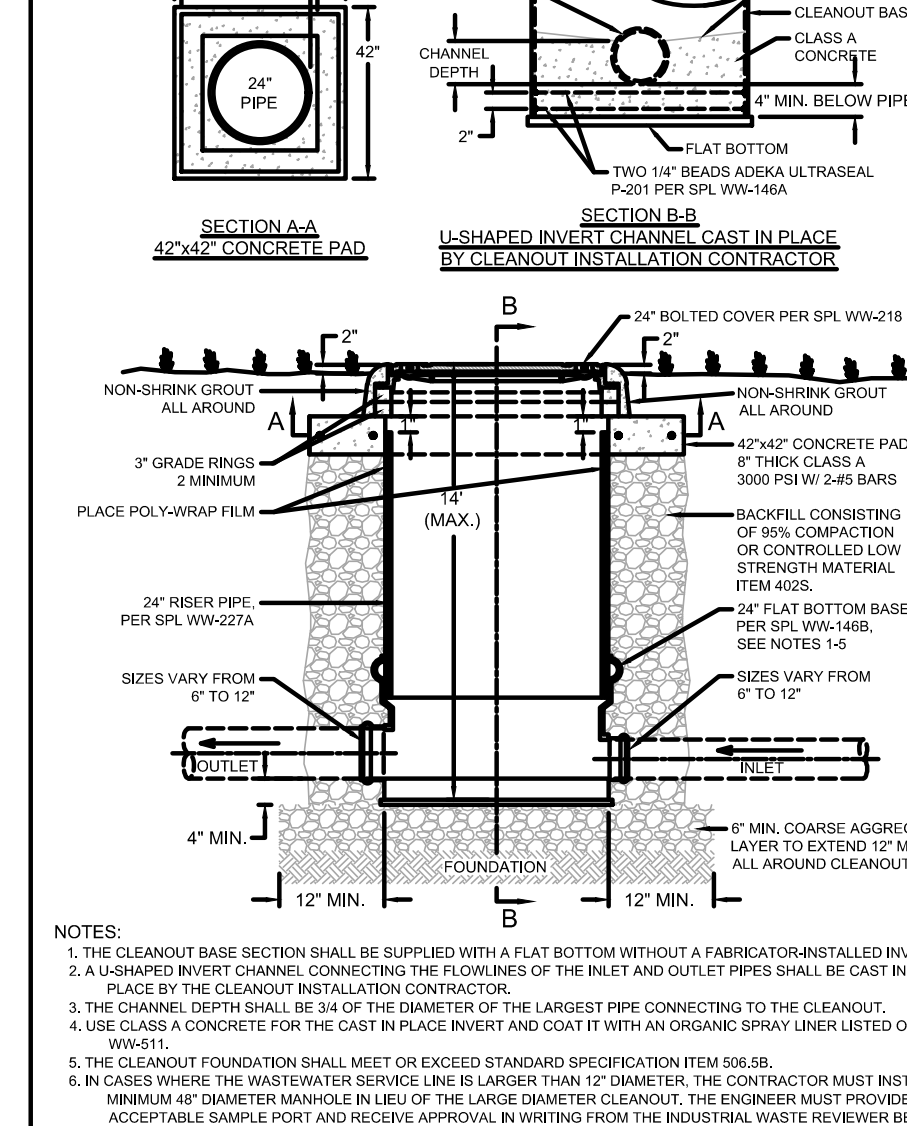
CITY OF AUSTIN AUSTIN WATER	1 1/2" - 2" METER INSTALLATION SHOWING OPTIONAL BYPASS	STANDARD NO. 511-AW-01 2 OF 4
Kathie A. Powers	05/18/2016 ADOPTED	THE ARCHITECT/ENGINEER ASSUMES RESPONSIBILITY FOR APPROPRIATE USE OF THIS STANDARD.



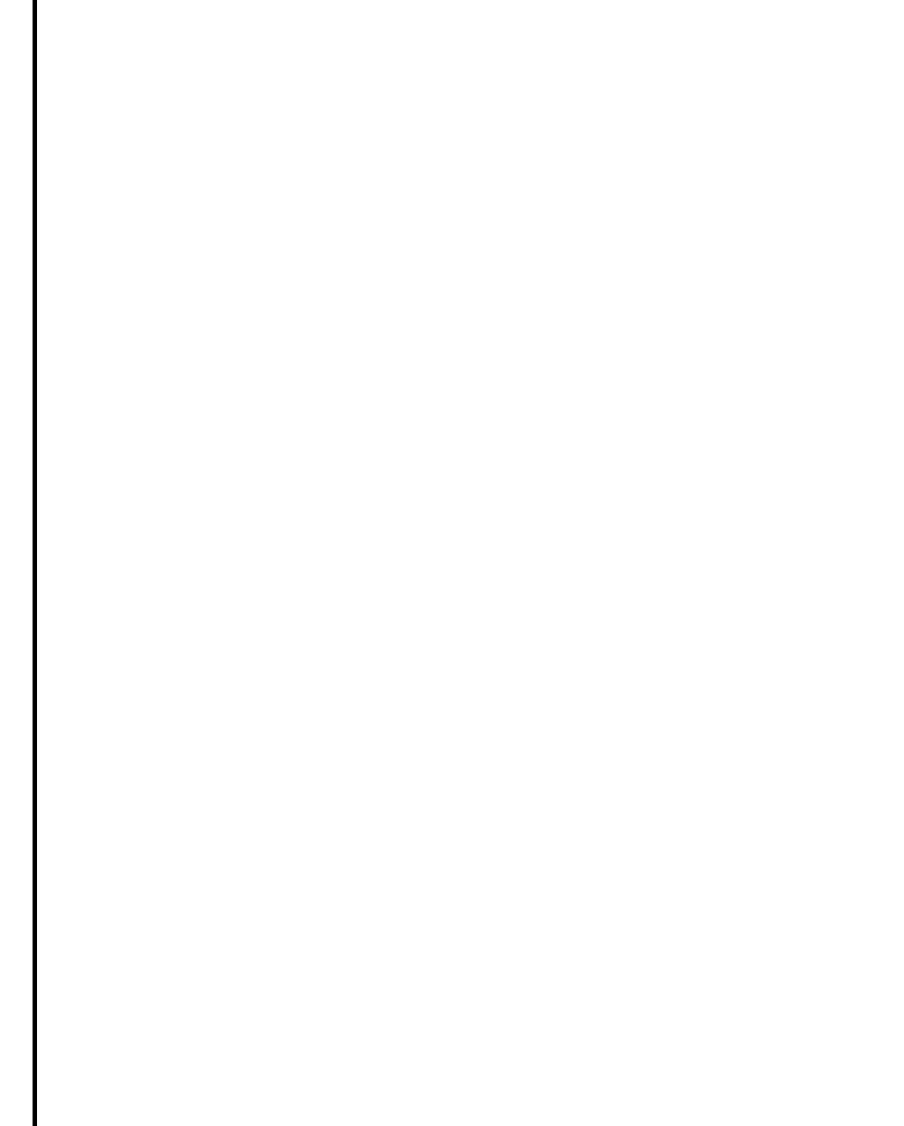
CITY OF AUSTIN AUSTIN WATER	1 1/2" - 2" METER INSTALLATION SHOWING OPTIONAL BYPASS	STANDARD NO. 511-AW-01 3 OF 4
Kathie A. Powers	05/18/2016 ADOPTED	THE ARCHITECT/ENGINEER ASSUMES RESPONSIBILITY FOR APPROPRIATE USE OF THIS STANDARD.



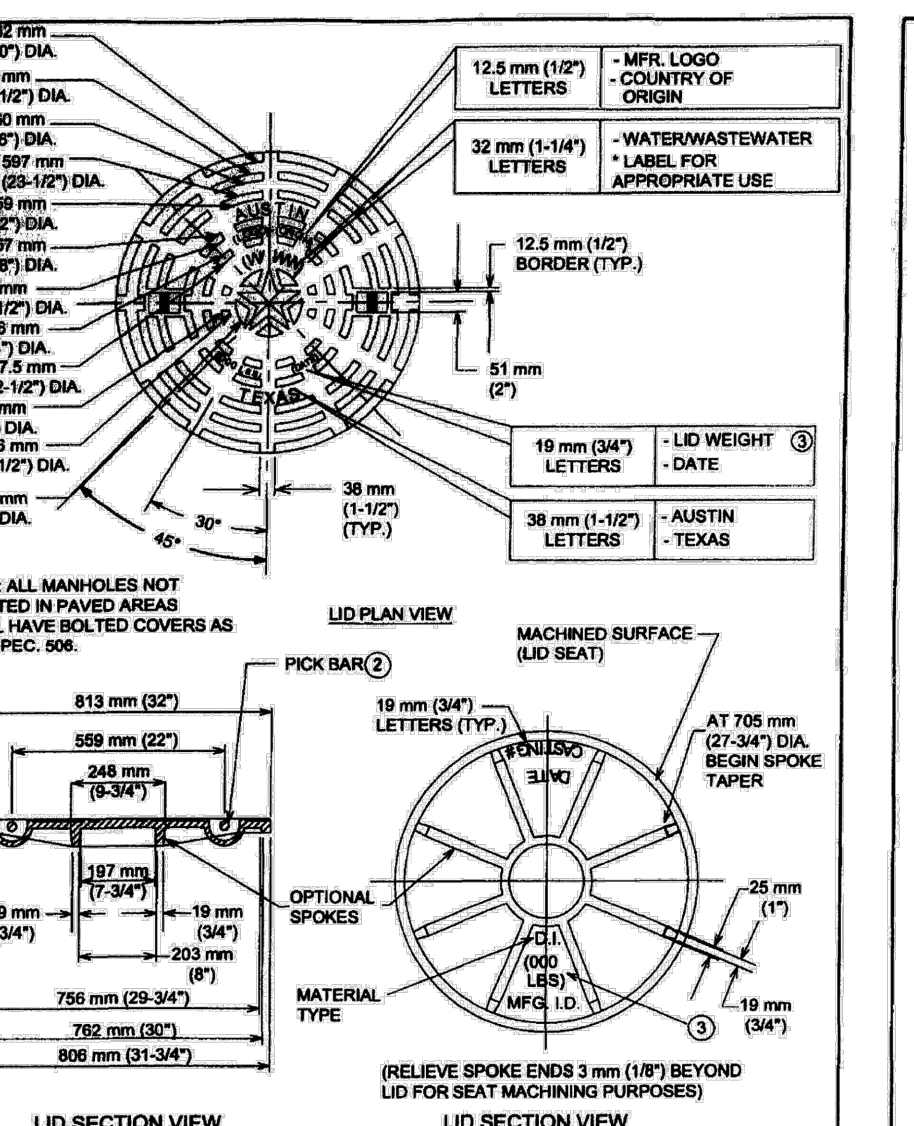
CITY OF AUSTIN AUSTIN WATER	1 1/2" - 2" METER INSTALLATION SHOWING OPTIONAL BYPASS	STANDARD NO. 511-AW-01 4 OF 4
Kathie A. Powers	05/18/2016 ADOPTED	THE ARCHITECT/ENGINEER ASSUMES RESPONSIBILITY FOR APPROPRIATE USE OF THIS STANDARD.



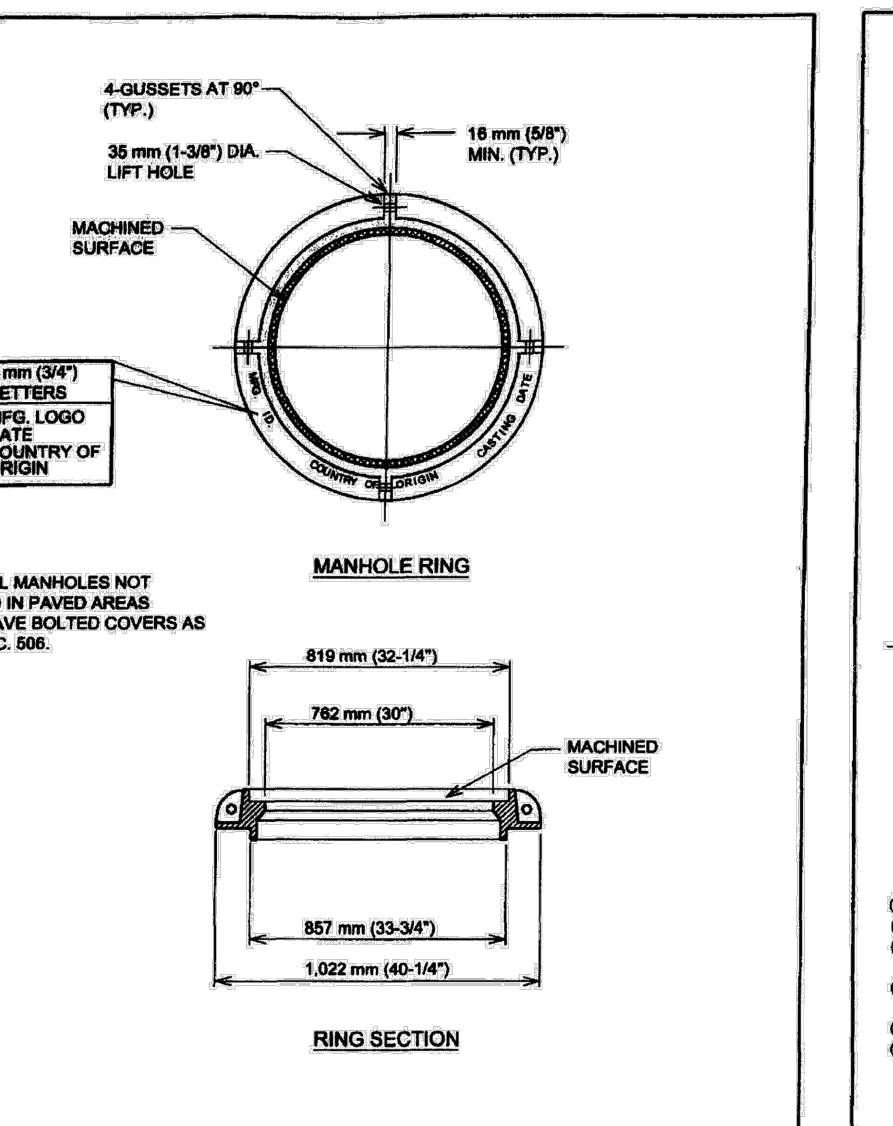
CITY OF AUSTIN AUSTIN WATER	1 1/2" - 2" METER INSTALLATION SHOWING OPTIONAL BYPASS	STANDARD NO. 506-AW-04 1 OF 1
JEFF A. KYLE	08/14/2020 ADOPTED	THE ARCHITECT/ENGINEER ASSUMES RESPONSIBILITY FOR APPROPRIATE USE OF THIS STANDARD.



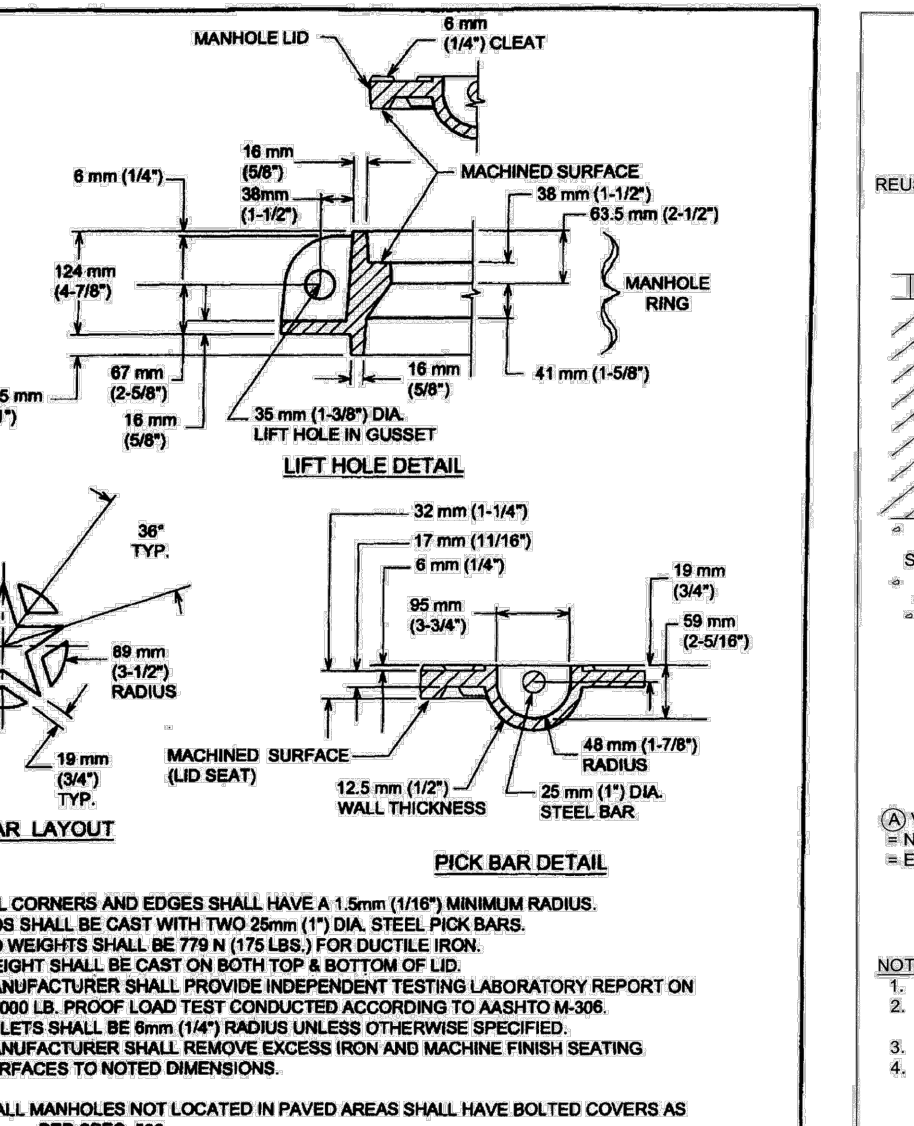
CITY OF AUSTIN AUSTIN WATER	1 1/2" - 2" METER INSTALLATION SHOWING OPTIONAL BYPASS	STANDARD NO. 506-AW-04 2 OF 2
JEFF A. KYLE	08/14/2020 ADOPTED	THE ARCHITECT/ENGINEER ASSUMES RESPONSIBILITY FOR APPROPRIATE USE OF THIS STANDARD.



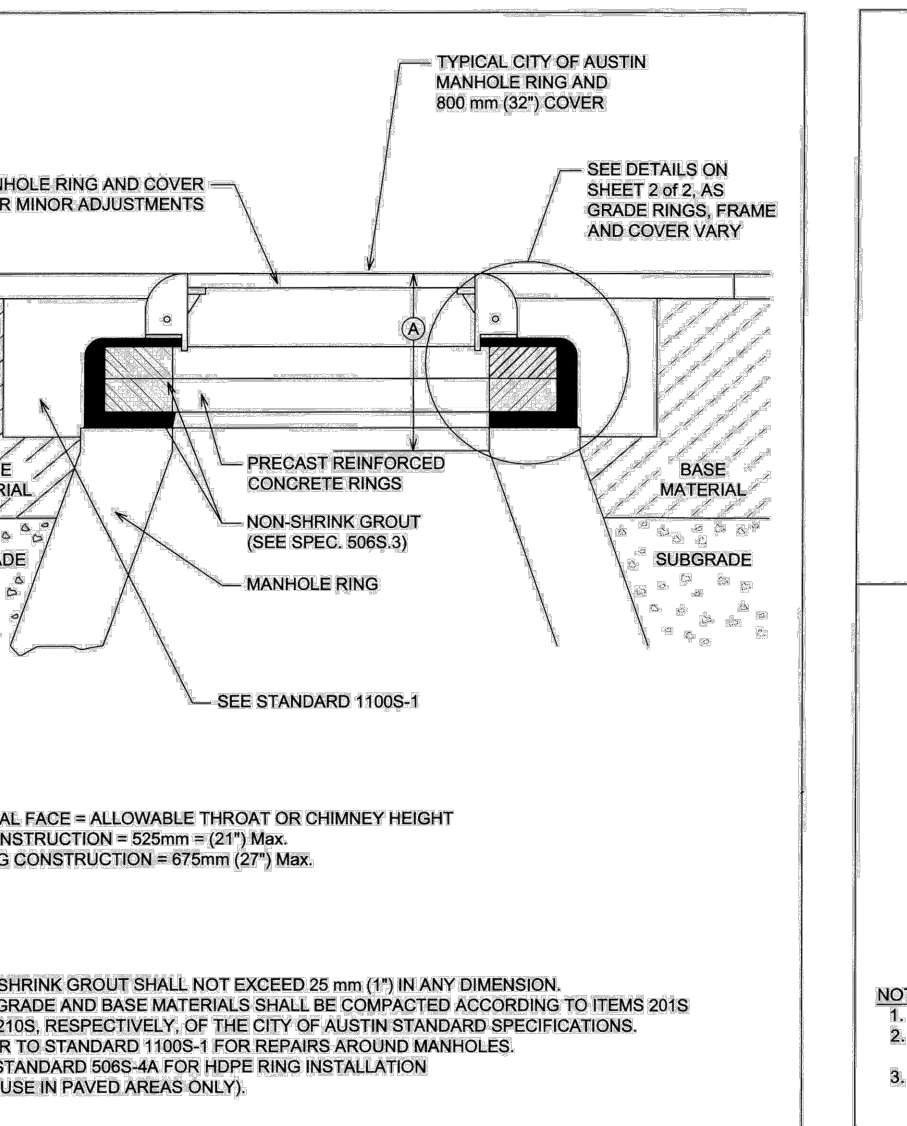
CITY OF AUSTIN AUSTIN WATER	1 1/2" - 2" METER INSTALLATION SHOWING OPTIONAL BYPASS	STANDARD NO. 503S-4W 1 OF 3
Kathie A. Powers	9/23/10 ADOPTED	THE ARCHITECT/ENGINEER ASSUMES RESPONSIBILITY FOR APPROPRIATE USE OF THIS STANDARD.



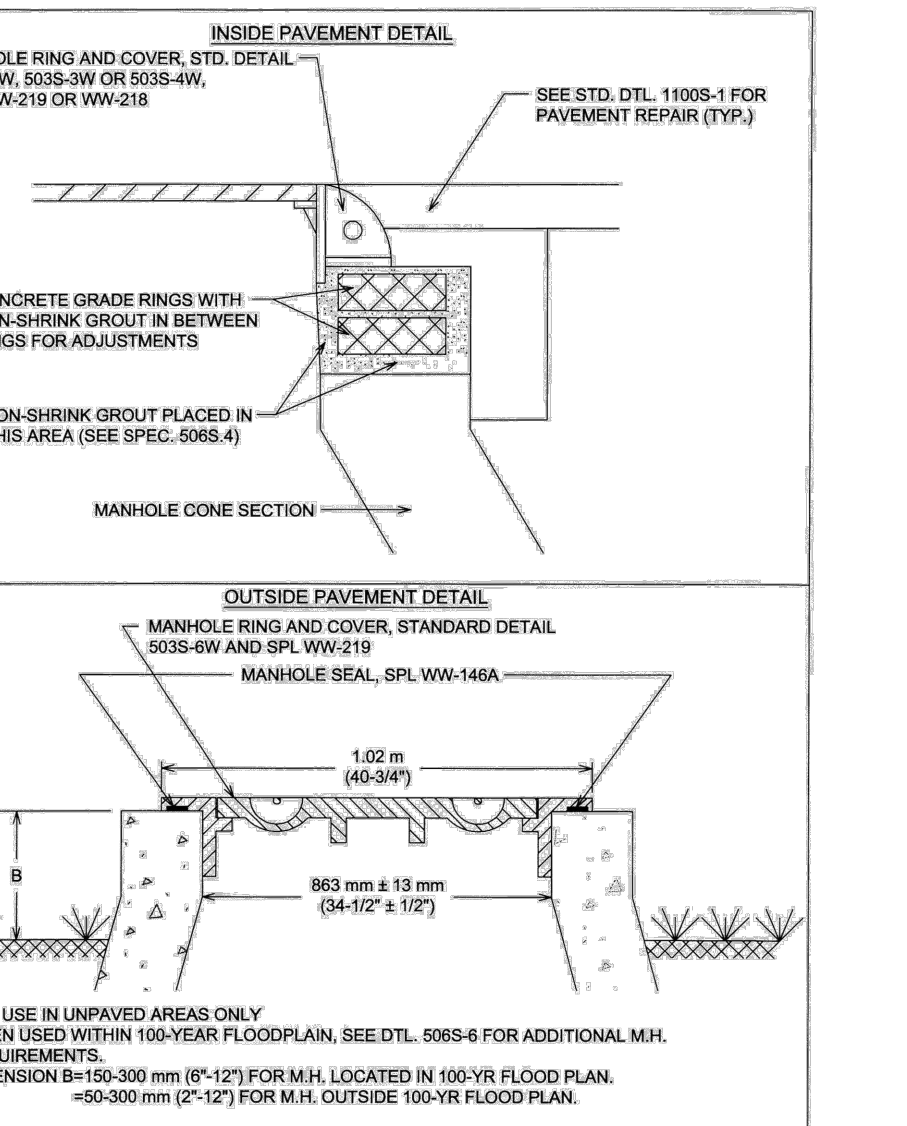
CITY OF AUSTIN AUSTIN WATER	1 1/2" - 2" METER INSTALLATION SHOWING OPTIONAL BYPASS	STANDARD NO. 503S-4W 2 OF 3
Kathie A. Powers	9/23/10 ADOPTED	THE ARCHITECT/ENGINEER ASSUMES RESPONSIBILITY FOR APPROPRIATE USE OF THIS STANDARD.



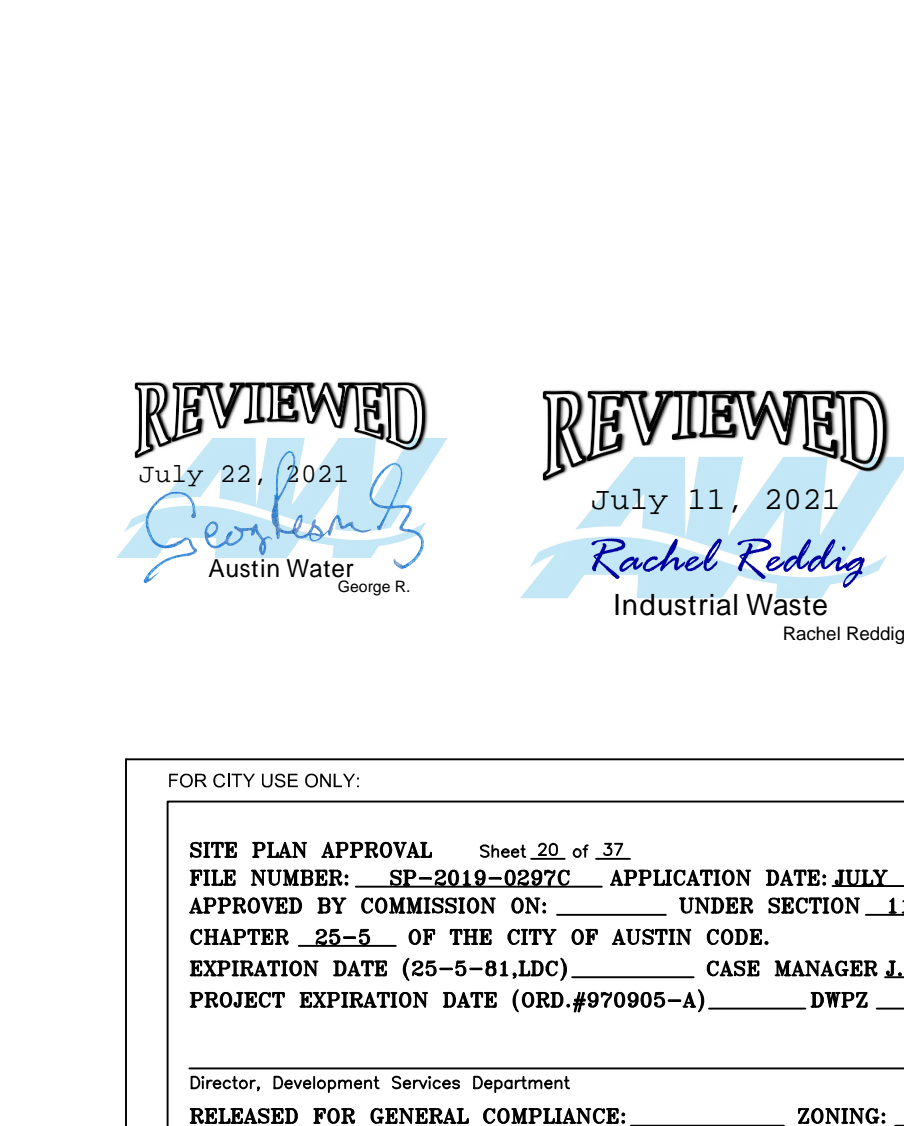
CITY OF AUSTIN AUSTIN WATER	1 1/2" - 2" METER INSTALLATION SHOWING OPTIONAL BYPASS	STANDARD NO. 503S-4W 3 OF 3
Kathie A. Powers	9/23/10 ADOPTED	THE ARCHITECT/ENGINEER ASSUMES RESPONSIBILITY FOR APPROPRIATE USE OF THIS STANDARD.



CITY OF AUSTIN AUSTIN WATER	1 1/2" - 2" METER INSTALLATION SHOWING OPTIONAL BYPASS	STANDARD NO. 506S-4 1 OF 2
Kathie A. Powers	8/31/2011 ADOPTED	THE ARCHITECT/ENGINEER ASSUMES RESPONSIBILITY FOR APPROPRIATE USE OF THIS STANDARD.



CITY OF AUSTIN AUSTIN WATER	1 1/2" - 2" METER INSTALLATION SHOWING OPTIONAL BYPASS	STANDARD NO. 506S-4 2 OF 2
Kathie A. Powers	8/31/2011 ADOPTED	THE ARCHITECT/ENGINEER ASSUMES RESPONSIBILITY FOR APPROPRIATE USE OF THIS STANDARD.



CITY OF AUSTIN AUSTIN WATER	1 1/2" - 2" METER INSTALLATION SHOWING OPTIONAL BYPASS	STANDARD NO. 506S-4 3 OF 3
Kathie A. Powers	8/31/2011 ADOPTED	THE ARCHITECT/ENGINEER ASSUMES RESPONSIBILITY FOR APPROPRIATE USE OF THIS STANDARD.

garza

7709 Rialto Blvd., Suite 125
Austin, Texas 78755
Tel: (512) 298-3234 Fax: (512) 298-2592
TBP# F-14639
Garza EMC, LLC © Copyright 2020

UTILITY PLAN DETAILS

218 SOUTH LAMAR
218 SOUTH LAMAR, AUSTIN, TEXAS 78704
PFLUGER WR & MC & PFLUGER
SPOUSAL

DRAWN BY: MBRM
DESIGNED BY: JDM
CA / OC:
PROJECT NO.: 113586-00002
SHEET
20
OF
37

FOR CITY USE ONLY:
SITE PLAN APPROVAL Sheet 20 of 37
FILE NUMBER: SP-2019-0297C APPLICATION DATE: JULY 15, 2019
APPROVED BY COMMISSION ON: UNDER SECTION 112 OF
CHAPTER 255.01 OF THE CITY OF AUSTIN CODE
EXPIRATION DATE (25-5-81.100) CASE MANAGER I. SITALA
PROJECT EXPIRATION DATE (ORD.#970905-A) DWPZ DDZ X
Director, Development Services Department:
RELEASED FOR GENERAL COMPLIANCE: ZONING: PUD
Rev. 1: Correction 1
Rev. 2: Correction 2
Rev. 3: Correction 3
FINAL PLAT MUST BE RECORDED BY THE PROJECT EXPIRATION DATE, IF
APPLICABLE. SUBSEQUENT SITE PLANS WHICH DO NOT COMPLY WITH THE
CODE CURRENT AT THE TIME OF FILING, AND ALL SUBSEQUENT BUILDING
PERMITS AND/OR A NOTICE OF CONSTRUCTION (IF A BUILDING PERMIT IS
NOT REQUIRED), MUST ALSO BE APPROVED PRIOR TO THE PROJECT
EXPIRATION DATE.